

A Pericardium Membrane powered by
GLYMATRIX® Technology

"First and foremost, I like the lasting power of the infused **GLYMATRIX®**. I like the handling properties, **OSSIX Agile™** is easy to maneuver and can go the distance, it is stretchy, and I was able to fine-tune the final positioning."

Dr. Sausha Toghranegar, DMD MS
Periodontist
Private clinic, Florida, US



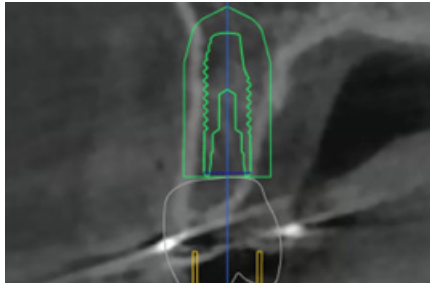
Immediate Implant Restoration with OSSIX Agile™ using PrimeTaper® Implant

A 24-year-old female patient, non-smoker, without significant medical history or medications, presented with congenital tooth #4 absence, adjacent tooth recession, and thin tissue. Assessment revealed sufficient crest width but apical 2/3 thinning bone, along with adequate keratinized gingiva. A space maintainer for #4 caused inflammation due to gingival impingement, and tooth #5 had a noticeable recession.

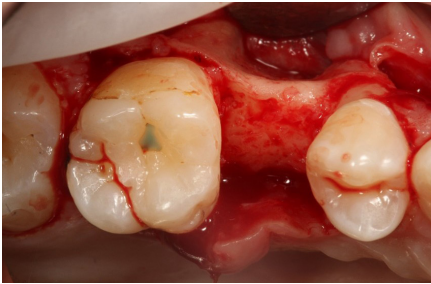
Radiography indicated suitable bone for implant, with concerns about buccal plate thinning and perforation at #4's apical 2/3. Treatment comprised space maintainer removal, debridement, ND Yag laser treatment, guided implant placement at #4, facial contour grafting, and primary closure for #5's recession. Utilizing OSSIX Agile™ (15*20 mm) for bone regeneration, Particulate Allograft (0.5cc) for bone support, and DS PrimeTaper® Implant (3.6x11) with cover screw and healing abutment, the approach demonstrated successful implant placement with significant bone gain seen in CBCT 4 month post-op.



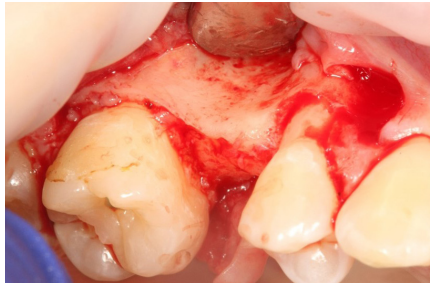
1. Occlusal view pre-op



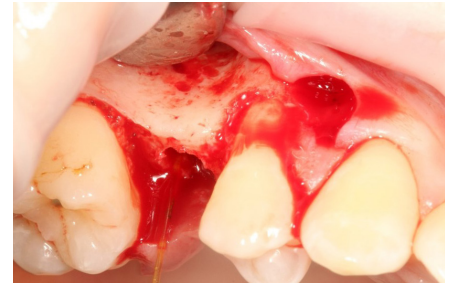
2. Planned implant position, Noticeable thin bone volume on the facial anticipated



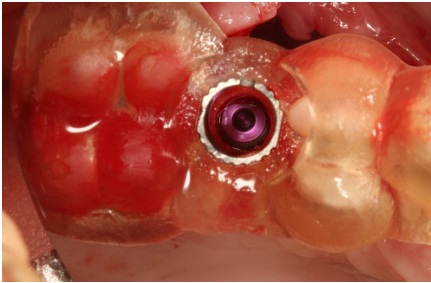
1. Occlusal view with depression noted at apical third of ridge



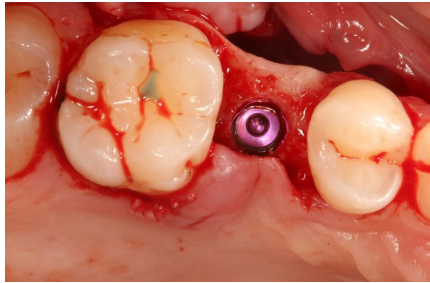
2. Facial view of the ridge



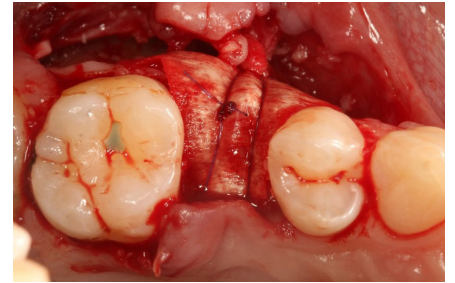
3. Facial view of osteotomy, decortications for angiogenesis, and ND Yag laser application to disinfect site



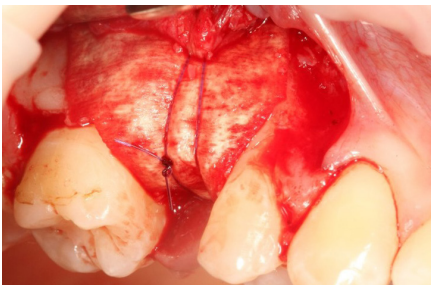
4. Occlusal view of DS Prime Taper 3.6x11 implant placed through 3D printed guide



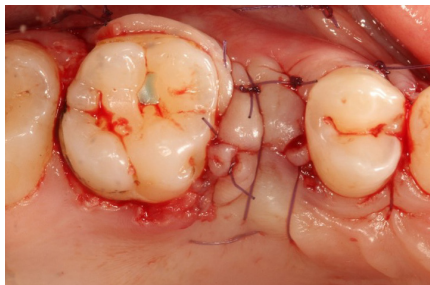
5. Occlusal view of implant placed



6. Occlusal view of OSSIX Agile™ membrane fixated over particulate allograft. Periosteal sling sutures used to initially secure membrane



7. Facial view of OSSIX Agile™ fixated with periosteal sling suture



8. Primary closure achieved

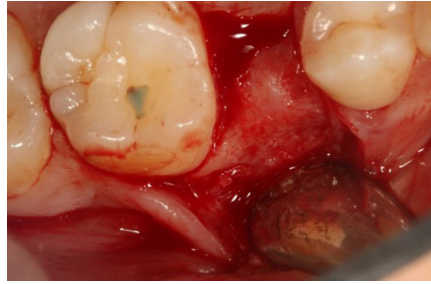
Early Post-Op



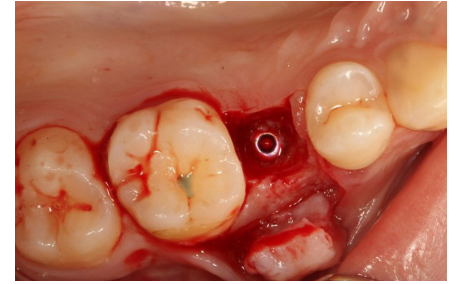
Post-op 2 weeks



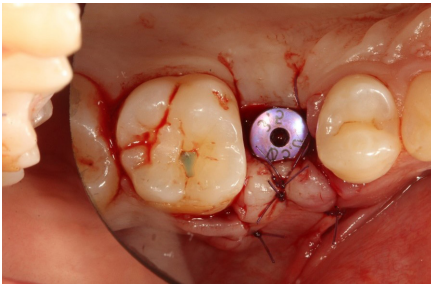
1. Occlusal View pre-op before uncover



2. Occlusal view, flapped site showing bone covering over implant



3. Occlusal view after implant cover screw is exposed after bone removal. Buccal bone regenerated

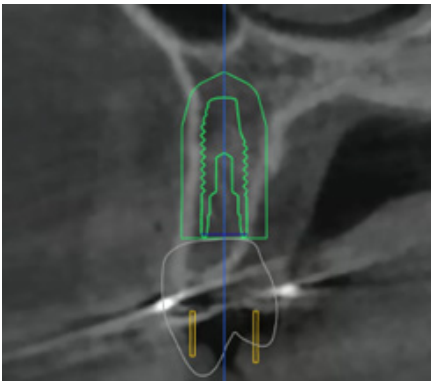


4. Healing abutment placed

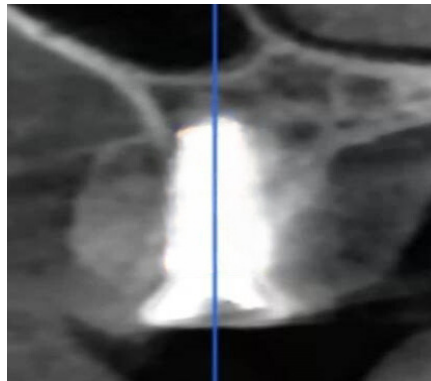


5. Peri apical Xray of implant with healing abutment

CBCT cross section showing pre and post surgery



Pre-Op



4 Months Post-Op

For more information on OSSIX® regenerative products and activities on your region:

www.datumdental.com



This case report is published as an inspiration for you as a clinician / technician and not necessarily as a recommendation from Dentsply Sirona